

Deaf Ministries International

Issue 34 | June 2021

USA EDITION



Saw Monday and family - Myanmar

*Taking the Gospel
to the Deaf*

“For I was hungry, and you fed me. I was thirsty, and you gave me a drink. I was a stranger, and you invited me into your home.”

Matthew 25:35 (NLT)

Burundi & D.R.Congo COVID-19 and volcanic eruptions cause food crises

The pandemic might appear to be easing in Australia but in other countries it remains devastating. In Burundi, our field director Fabien Hamissi reports a desperate need for food. 124 men and their families face starvation and have requested quantities of rice, beans, flour, sugar, porridge as well as charcoal and oil for cooking.



You might have seen pictures on the news of the spectacular volcanic eruption in the town of Goma, DR Congo. The lava flow and earthquakes have caused the destruction of property and wiped out many food sources. This has caused food prices to skyrocket, leaving the vulnerable in a crisis. Two of our evangelists Eric Kam-bale and Jackson Muhindo have lost their houses.

continued...



www.deafmin.org





Volcano aftermath

350 others in the deaf community are struggling to feed their families. They need help.

Thanks to some remaining money in our food emergency fund and some quick responses from DMI supporters, we have been able to send \$30,000 to help Burundi and Congo. With the ongoing pandemic, we expect we'll need more funds for food aid in other countries in the coming

months and will look at how we can provide sustainable solutions following that, as we did last year in Beni, Congo and other fields.

Please help by donating through the Food Emergency Appeal. Details below.



COVID-19 has had an impact on all of us around the world. Some countries have been impacted more than others, but every country has felt the effects. Many people who DMI support in developing countries are still struggling harder than most.

Lockdowns and restrictions for them means no work, no income, no food. We are continuing to run this appeal to raise much needed funds to give the Deaf access to staples to feed their families.

TO DONATE:

Paypal or Credit Card or Bank Transfer donations go to:
www.deafmin.org/donate (Click on Food Emergency button)

OR

Bank Transfer details are available on the back cover
Use "food emergency" as ref.

Beni School Kitchen Garden/Farm Update

The Beni school's kitchen garden has crops already being harvested. It was decided to create two kitchen gardens, one on school grounds and the other 10km from the school where they have leased one hectare of land. The garden on the hectare is already very productive. They have planted and harvested sweet potato and cassava. Cassava is a root vegetable that looks quite similar to sweet potato in shape. The leaves of the cassava plant are also edible. When the ideal season for planting comes around, the plan is to also plant beans and legumes. The crop has been a successful and plentiful one - enough



to feed the school and sell excess at local markets. The profits will be invested back into the farm for wages and the planting of the next crop. STOP PRESS! We've just received an update about the kitchen garden on the school grounds and we are excited to say it's thriving! The garden at the school will not only provide



New farm land

students with food for lunches, but an opportunity for student to learn how to plant, grow and harvest crops, skills that will be of great benefit in the future.



Rwanda



Nyarugenge



Rubavu



Kicukiro



Online

Rwanda has quite a few Deaf churches spread across the country. Most meet in local classrooms in their local communities and at least one meets in a member's house. It's wonderful that they have somewhere to meet but they also face a really good problem...not enough space! The churches are working towards raising enough funds to purchase land to build church buildings large enough to hold their congregations. In the meantime, the congregations continue to meet together in person and online in the spaces that they have, to pray, worship and study God's word.

Pastor Marie Clair and Pastor Marie Goreth recently went to visit a Deaf-Blind woman named Mariam. They went to visit her because she had expressed a great thirst to learn more about God's word and has a desire to be bap-



We have also purchased two other parcels of land which the main purpose will be to grow crops with a side project of raising animals. The plan is to start off with smaller animals such as chickens and ducks. In time we will purchase goats and sheep. One of the areas purchased has eucalyptus trees on it. In a few years they will be perfect for building material and firewood. The other parcel of land has cocoa and palm trees which in time will also have fruit crops that can be harvested.

DMI will support this initiative financially until the end of the year with the hopes that it will be able to fully support itself after that.



Above: Teaching the students to plant vegetables
Left: Students beating dry beans from stems.



tised. Pastor Marie Clair and Pastor Marie Goreth were able to communicate with her using tactile sign language. This is a sign language that is communicated by touch. They were also able to share the gospel story with her by using pieces of coloured paper. Mariam is able to make out colours. For example, red means Jesus. Please pray for Mariam as her faith begins to grow. Her family are Muslims and are not keen for her to be baptised or be a follower of Christ. She is often isolated in her home as those around her don't know how to communicate with her. She is always excited for her visits from Pastor Marie Clair and Pastor Marie Goreth and the love that they bring with them.



Malawi

We're very excited about a new sustainability project just starting up in Malawi. After carefully preparing a cost analysis report, Elton, our National Director in Malawi, is currently renting seven lots of farmland on which to grow maize, peas, soya beans, sun flowers and ground nuts in the rainy season, and cabbages, maize, cornflower and tomatoes in the dry. Funds have been supplied from our self-sustainability fund.

The lots of land are promising, with good soil and a reliable water supply. The initial stage involves preparing the land, purchasing fertiliser, seeds, tools and equipment. With good weather, we project the three lots will bring in more than AUS\$7,000 over the next 12 months. This income will then sustain the project, provide employment

and bring in an income for other work in Malawi, including a proposed chicken farm next year. Please let us know if you are interested in helping to start the chicken farm. One of the other things that we are adding to these sustainability projects is better follow up. In the past, we have tended to set projects up and left them to run and these have not always been successful. With this and future projects, we will be working more closely with those involved to encourage and guide them so that we can be sure the projects succeed and benefit the community as intended.

Kenya -New Sustainability Project

It's amazing how many things we just take for granted in the western world like clean water, food availability, a roof over our heads, government assistance and overall sanitary needs. For many in the countries that DMI supports, these are day to day struggles. DMI is about to launch a new sustainability project in Kenya that will not only benefit the sewing workshop but also the female students at DMI's Immanuel School for the Deaf.

Many girls and women in Kenya don't have access to, or can't afford, sanitary items to care for themselves during their menstruation. Girls at our Deaf school have been known to use paper or tree bark as their sanitary pads. Some are unable to attend school during this time which means they are missing out on a few days of classes every month, just because they don't have access to the resources they need to care for themselves.

There are still a few details to work out, but our sewing workshop in Nairobi, Kenya, will begin to make reusable sanitary pads for our female students in the school. Each of the female students and teachers that require this resource will receive 2 packs of 4 reusable sanitary pads so that they have enough spare between washes.

DMI is able to cover the costs to seed this project. Start-up funds were generously donated for the workshop to purchase what is needed to start production. Funds raised towards sustainability from the gift catalogue at Christmas will enable the school to purchase the sanitary pads from the workshop.

After Kenya school has paid for the pads, the sewing workshop will be able to use those funds to make another batch. The plan is for them to approach other schools and organisations with this initiative with the hopes of them placing orders through the sewing workshop. DMI will also approach some larger organisations to see if they would also like to use this product for their distribution. Not only will this provide work and income for the sewing workshop, but assist a great need amongst the Kenyan girls and women.

Do you know any organisations that would be interested in putting through an order to aid African countries? Please contact Susianti.tjhai@deafmin.org



If you would like to donate toward our sustainability fund, please go to the donate page on our website:
www.deafmin.org/donate

Myanmar - Dire Emergency in Kalay

Pa-lian has just written to us with some very sobering news regarding our school in Kalay:

"Kalay is the most dangerous place for COVID especially on our block. Everyday 5-10 people are dying in that small town. Yesterday it was 10 who died from COVID. Now all of Saw Monday's family are sick, including the children and the cook Mrs. Saa Thuai. It's not yet confirmed if they have been infected with COVID. They have not been tested yet. It could be the normal flu. Yesterday they went to the clinic but they were refused. The big problem is that no hospitals are open. Most are closed since the army took over because the doctors and nurses are on strike."

Please pray for Saw Monday, his wife Ding-Ding, their two children and Saa Thuai. Pray for all those in Kalay that they would be protected from this virus.

At the church in Yangon, Pastor Naing Naing Kyaw and

family are doing well but like everyone else, they are struggling without a salary. The banks remain closed and the ATMs are only allowing the withdrawal of 3 lakhs a week (about \$235) - officially. In reality it's less than that. The queues remain very long at the banks. We have been withholding any further budget for Myanmar until the banks reopen.

Because the price of bus fares has doubled, attendance at church has dropped. Still, in our most recent report from Pa-Lian, he rejoices in 60 Deaf gathering to celebrate the Lord's supper followed by a wonderful meal thanks to donations of rice, oil, noodles and onions from a kind Korean couple.

There remains a lot of uncertainty, sickness and hardship. Let's continue to pray for all our brothers and sisters in Myanmar.

DMI Online Gallery

We're very excited about our new DMI online gallery. It features the collages made from DMI children's artwork which were displayed in the art exhibition in March. New items will be added periodically. Purchase gorgeous framed prints, canvases and other products easily and support DMI at the same time.

<https://www.artpal.com/dmi>



China

It's been a little while since we've updated you on the work in China. They've been battling Covid just as we and others have all have around the world. They've been in lockdowns too and haven't been able to meet in person, but this has not deterred them from worshiping God! It's not easy for them to freely share the good news of Jesus



Park meeting



Bible study online

at the best of times, so Covid has added extra challenges to contend with. Their job is not easy, but God has continued to protect them and they have found ways to gather together to study God's word, even if it's not in person. A few churches have been able to have Bible studies online and one church managed to meet once in person at a park. Prayer has been requested for God to give them wisdom on how to reach the younger generation of Deaf. Also let's continue to pray for the protection of those ministering to the Deaf in China. The circumstances are difficult with lack of freedoms that many of us will never experience.

It's harvest time in Ligao for the rice plantation. Despite all the challenges that that Covid has brought, they've still been able to get their rice crop planted and harvested ready to go to the mill. This is a self-sustainability project that supports the school and other local projects.

In some other exciting news, another litter of piglets has been safely delivered by one of the sows in the piggery. Some the piglets will be raised for meat, others sold and some kept for breeding. 60 chickens have also been raised and sold at the market. These programs all serve to support the school and other local projects.



Rice ready for harvest



Harvesting



Drying harvested rice

Australia - Classic Car Exhibition a Success!!



came up from Melbourne to MC the event with the aid of DMI supporter Anne Horton as interpreter. David did a superb job. It was good for the mostly hearing crowd to experience David's signing and to meet with him afterwards.

Andrew Miller, our National Coordinator, shared about the work that DMI and DA are doing and this was well-received by those in attendance. **Andrew's speech can be heard (and seen - Anne signed everything that night!) here: www.deafmin.org and click on "YouTube" link on our home menu.** Former Prime Minister Hon. John Howard was guest speaker and spoke very favourably of the work that DMI is doing, while telling some amusing political stories along the way. Before and after the speeches,

DMI's Classic Car Fundraiser in Sydney, hosted by renowned Christian philanthropist Phil Cave (who owns and drives the cars!) was a huge success. Supporters were treated to a stunning array of supercars to ogle, and sumptuous food to devour.

DMI Board member David van Namen, who is Deaf,

he worked the room to make everyone feel like an old friend.

With 45 people in attendance, DMI made over \$11,000 in ticket sales from the evening, and

a further \$25,000 in pledges were made on the night for our Self-Sustainability Fund. We were also able to sow the seeds for some positive ongoing partnerships. It was a wonderful evening, evidenced by the fact that we couldn't get people to leave at the end! We're grateful to all those who hosted, spoke and supported the evening.



John Howard, Andrew & David



John Howard & Anne

Australian AGM

Australian Members, Directors and staff enjoyed the gracious hospitality of Steve and Di McAllister for our Annual General Meeting on 22 May. The members met for prayer and to hear annual and financial and sponsorship reports for 2020, as well as our vision for the coming year. If you would like to receive any of the reports, please email info@deafmin.org.

The 2020 Annual Review can be found online on our website at www.deafmin.org and found on the drop-down menu under "About"



Welcome Kay!



Welcome Kay!

We'd like to introduce Kay van Namen to you. Kay will be joining our office staff in Melbourne from July as Child Sponsorship and Administration Assistant. She will be replacing Rebecca Muir who, sadly for us, will be leaving to pursue a Ph.D. Kay, who is Deaf, comes well qualified and experienced for the job and we

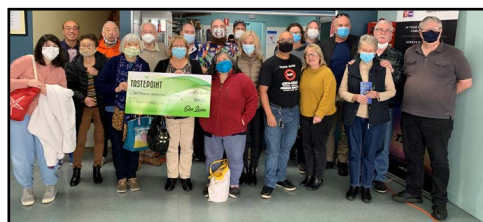
look forward to her contribution to DMI's work. Aside from regular office work, Kay will also serve as a valued contact with our Deaf community. Welcome Kay!

Another successful meat tasting fundraiser

Covid restrictions were thankfully eased in Melbourne, Australia, just in time for us to go ahead another



meat tasting to raise \$1000 for DMI. We'd like to give a big thank you to all 60 participants that showed up on the day to ensure we were able to receive the \$1000. The event



ran as three sessions of 20 people. Thank you again to Janette Lee for interpreting for the Deaf participants. Special thanks

to one of our sponsors who brought a group of her friends and also to 11 members who came from the Dingley Rotary Club.

For this event we had 20 extra people interested in participating than we actually needed so we'll be holding two more tastings on September 18th (Hampton Park) and 25th (Glen Waverley).



If you missed out participating this time, or would like to participate again, it's time to reserve your spot! Email Susi at susianti.tjhai@deafmin.org. This is a free event where all you have to do is show up and eat (and rate some delicious cuts of roast meat). DMI then receives \$1000. Pretty good, hey!?

How are you receiving your newsletter?

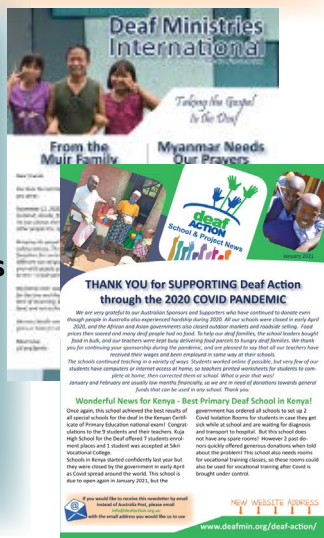


We spend approximately \$6,900AUD a year on hardcopy newsletters. This is a good use of funds if readers don't have email addresses or find the hardcopy easier to read. We love being able to bring you the news from the fields as regularly as possible. But for those who do have email, we can save some of that money and send more of it to the Deaf in need.

Can you make the change from hard copy newsletters to email versions? If you can, send us an email to info@deafmin.org with your preferred mail address, requesting to make the change to e-newsletters. Thank you for your ongoing support of this ministry.

Keep up to date with all the latest news from our schools, sponsorship program and projects by receiving our **Deaf Action Newsletter**.

If you would like to receive this in addition to the DMI newsletter, please contact us at info@deafaction.org.au



Praise and Prayer

- Pray for the families that are facing starvation in Burundi and the day to day struggle that it brings. Give thanks for the provision of funds which provide relief and nourish hungry bodies.
- Give thanks for keeping those in our Deaf community safe during the eruption of the Volcano in D.R.Congo. Now as they face a new struggle of lost homes and limited food supplies, may they know that you are with them through all things. Give thanks that God has provided funds for us to send to help in their time of need.
- Praise God for the land that has been purchased by the Beni school in D.R.Congo. May the land be prosperous and provide not only the needs of the school, but also the community around them.
- Praise God for the growing church in Rwanda, and for the many Deaf who are hungry for the word of God and going through the waters of baptism. Pray that the churches will continue to flourish and many more Deaf will come to know Jesus.
- Praise God for the new sustainability projects that are starting up in Malawi and Kenya. Pray for God's hand to be upon these projects and that each will glorify Him with all people knowing that our Father God is central to the success of these projects.
- Pray for Myanmar. The Burmese are struggling. After facing unrest due to military rule, another wave of Covid is now sweeping across the country. Lord, this country needs you! Pray for the continued safety and protection for all of the DMI Deaf community over there.
- Pray for our DMI family in China. We praise God for the strength He has given them as they've faced many lockdowns but have still found ways to praise and worship God, growing through His Word. Pray for their continued protection as they try to reach out to the younger generation to teach them of God's great love.
- Praise God for the successful classic car exhibition in Sydney. Give thanks that the event was sold out and considerable funds were raised for the continuing work of DMI and Deaf Action. Give thanks for all of those who were involved in making the evening a success. May the funds raised bring glory to God!
- Praise God for Kay joining us on staff here in Australia. Give thanks for God's perfect timing in bringing Kay to this position just as Rebecca is finishing. We pray for a smooth transition and that Kay will feel very welcome as she joins the DMI family. We are thankful for Rebecca and even though she's only been with us short time, she has been such a valuable member of our team and will be dearly missed. Pray for blessing upon her and her family as she answers God's call to begin her Ph.D. in Theology.



Neville & Lill Muir
DMI Founders



www.deafmin.org

DMI Evangelistic Donations:

Please make cheques payable to:

Midlands Christian Fellowship
(unless you already have an arrangement with Stewardship UK)

Details for EFT:

SWIFT CODE: BENDAU3B
BSB: 63-30-00
Account: 145833539

Paypal facility (secure) on website

USA Inquiries:

Deaf Ministries International
C/- Mrs Kathy Toth
8746 Bluebird Drive
West Chester OH 45069

Tel: 843 682 4934 (Mr. Peter Pfeil)
Email: peter.pfeil@deafmin.org

Australian Office



Deaf Ministries International
P O Box 395
Beaconsfield, Victoria 3807
Australia

Ph: +61 3 5940 5431
e-mail: info@deafmin.org