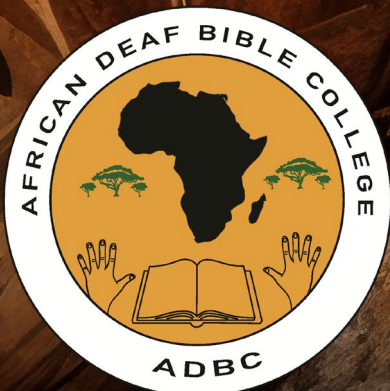
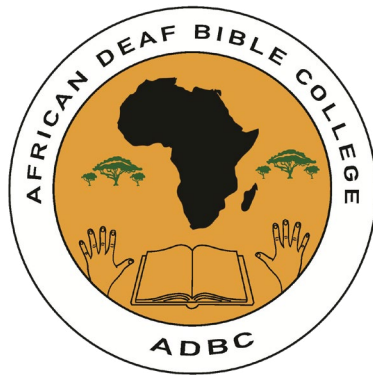


African Deaf Bible College

Empowering Individuals to
Lead with Faith and Excellence





Contents

Introduction.....	3
Mission, Vision, Values.....	3
Message from the International Director.....	4
College Organisational Structure.....	5
Partner Support.....	6
Student Enrolment.....	6
Courses Available.....	7
Course Content.....	7
Student Fees.....	13
Language of Instruction.....	13
College Design Graphic.....	14
Contact.....	16

Introduction

The African Deaf Bible College (ADBC) is an educational institution designed to provide in-depth theological education to Deaf and signing people across Africa. Located in the Bugesera District, Eastern Province, Rwanda, it is scheduled to open in January, 2026.

In partnership with Deaf Ministries International (DMI) and other mission organisations, the College is designed to provide certificate, diploma and degree level programs for up to 350 students at any time - boarding and non-boarding - from all over the African continent who can, once graduated, return to their home countries to plant new churches for the Deaf or strengthen existing ones. Our goal is to see every Deaf person in Africa reached with the gospel of Jesus Christ.

Mission, Vision, Values

Mission

Equipping individuals with the knowledge and skills to lead with the integrity and spiritual insight needed for effective Christian ministry to the Deaf.

Vision

To empower Deaf and signing individuals to lead with faith and excellence.

Values

Excellence

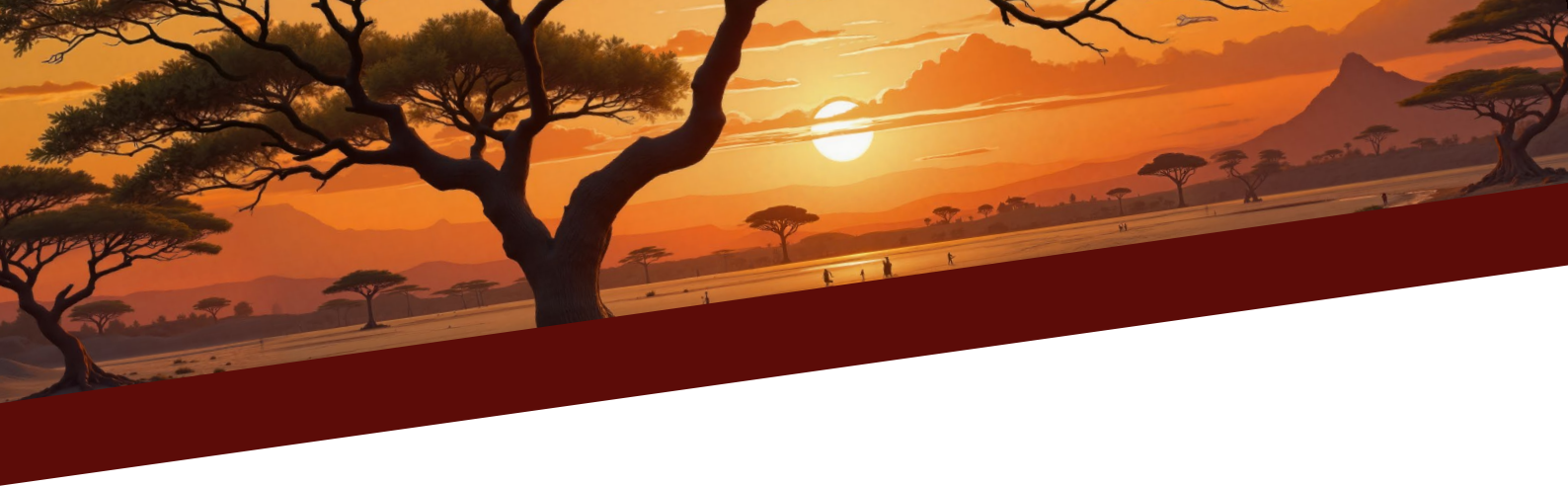
Knowledge

Compassion

Faith

Courage





Message from the International Director



The opening of the African Deaf Bible College is a huge step in realising one of DMI's primary visions: to develop three seminaries for the Deaf on three continents. This has never been done before. By building seminaries for the Deaf in Africa, the Middle East/Europe and Asia, we will be poised to take the gospel of Jesus to Deaf people all around the world. This is so exciting.

DMI's organisational mission is to take the gospel, education and employment to the Deaf all over the globe. This College is at the heart of that mission. We are partnering with Deaf Action Ministries Rwanda (DAMR) to realise our vision for Africa. We have worked closely with DAMR for over a decade and have the utmost confidence

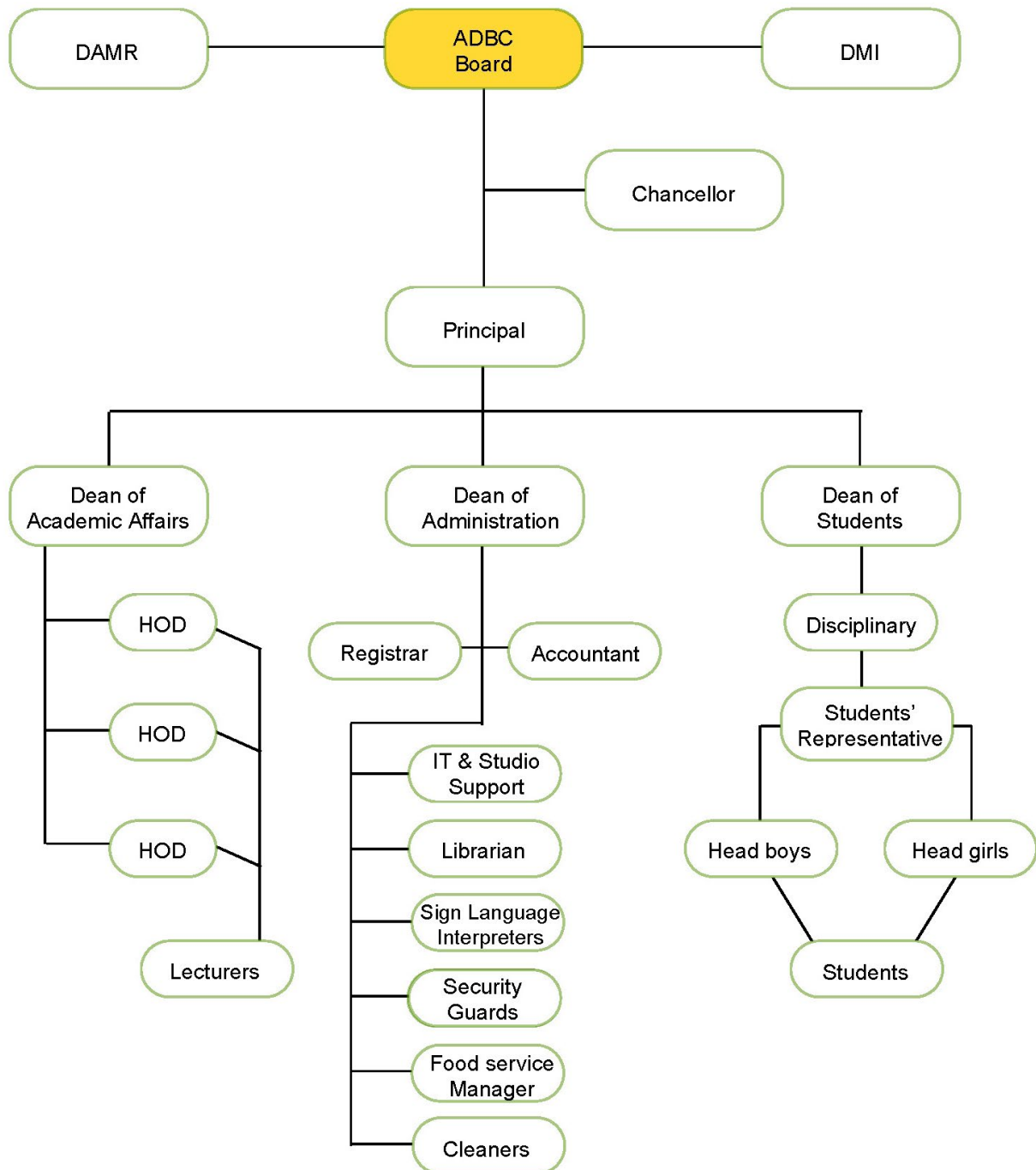
in their ability to lead students to excellence. It is our pleasure to partner with them and to invite others to join us in this work.

By providing students with certificate, diploma and degree level programs, we will be able to prepare the next generation of Deaf and signing leaders - pastors, evangelists, teachers and administrators - with a quality Christian education that will not only change lives but whole communities.

Whether you are a potential student, mission partner, staff member or supporter, you are welcome to join us here at the African Deaf Bible College and be a part of an amazing new chapter in missional life.

Andrew Miller
International Director

College Organisational Structure



Partner Support

Partnering organisations

The running of an institution like the African Deaf Bible College is costly. DMI and DAMR are keen to receive partner support to enable the College to operate at the highest level. Mission organisations, churches and interested individuals are encouraged to contact us to discuss entering a partnership to help us achieve the exciting mission goals of the College.

Sending organisations

Deaf churches and organisations anywhere in Africa - and indeed the world - are welcome to enrol their students and members in the College and support them through tuition fees and other requirements of the ADBC administration.

Student Enrolment

The African Deaf Bible College (ADBC) offers three programs: a three-year degree (Bachelor's degree in Theology), and a one-year postgraduate diploma and certificate. Prospective students who have completed secondary school and have a secondary school certificate are eligible to enrol directly in the degree program (Bachelor's degree in Theology). Those who have completed another Bachelor's degree in university can start the one-year Postgraduate diploma in Theology. Those who have not completed secondary school can start the one-year certificate. Upon completion, they will have the opportunity to progress to the Bachelor's degree in Theology.

The academic calendar for all programs will begin in the second week of January and end in November each year. The college can educate up to 350 students, with the dormitories having a capacity to accommodate 200 students (100 females and 100 males each). Students will have the option to study as day attendees (non-boarding students) or reside at the college as boarding students.





Courses available

- One-year certificate: Certificate of Completion
- Postgraduate Diploma: Postgraduate Diploma in Theology - 1 year
- Degree: Bachelor Degree in Theology - 3 years

Courses are accredited by the Higher Education Council (HEC) under the Ministry of Education in Rwanda <https://www.hec.gov.rw/>

Course content

Courses to be offered at ADBC are listed as follows:

Certificate (Pre-Year 1)

Those who have not graduated from secondary school and do not have a secondary school certificate, but have at least three years of experience in church leadership, are eligible to enrol in the Certificate (Pre-Year 1) program at college. Upon successfully passing the exams in the certificate (Pre-Year 1) program, they can be promoted to continue in the Bachelor's degree program in Theology.

College Level	No.	Course	Description	Hours
Certificate (Pre-Year 1)	1	Biblical Studies	Introduction to the Bible, its structure, and key teachings.	
	2	Bible stories	A study of key events and figures in the Old and New Testaments.	
	3	Biblical Literature	An exploration of the various genres found in the Bible, such as historical narratives, poetry, prophecy, and epistles.	
	4	Christian History	Exploring the history of Protestantism and its role in Christianity.	
	5	Theology	An introduction to Protestant Christian beliefs, including topics like the Trinity, salvation, and the nature of God.	

College Level	No.	Course	Description	Hours
Certificate (Pre-Year 1)	6	Christian Living	Practical guidance on living out the Christian faith.	
	7	Ethics and Values	Examining ethical principles and values in the context of Christianity.	
	8	Ethics and Values	The principles of interpreting and understanding the Bible effectively.	
	9	Mission and Outreach	Understanding the role of the church in spreading the Christian faith and serving the community.	
	10	English I	Verbs, Tenses, Grammar, Vocabularies	
	11	Sign Language	Developing proficiency in sign language, including religious vocabulary and Deaf grammar.	
	12	Mathematics	Number sense, Measurement, Geometry, Fractions, practical applications, and Financial mathematics. (Basic mathematics)	

Postgraduate Diploma in Theology (one year)

Those who have completed another Bachelor's degree in university will start the one year Postgraduate diploma in Theology.

College Level	No.	Course	Description	Hours
Postgraduate Diploma Year 1	1	Biblical Theology and Hermeneutics	This course focus on the study of biblical interpretation and the theological themes that run throughout the scriptures	
	2	Introduction to the Bible	This course provides an overview of the Bible, its various books, and its historical and cultural context.	
	3	Systematic Theology	Exploring the core doctrines of the Christian faith in greater depth.	
	4	Pastoral Care and Counseling	Provides essential skills in pastoral care, including emotional and spiritual support, counseling techniques, and ethical considerations in ministry.	

College Level	No.	Course	Description	Hours
Postgraduate Diploma Year 1	5	Research Methodology	Introduces students to the principles and methods of research.	
	6	Church Governance	A study of leadership structures, administration, and governance in the church.	
	7	Church History	The history of the Christian Church, including the development of Christian doctrines and the history of the Church.	
	8	Practical Theology	This course bridges theological study with ministry practice, equipping students with skills for preaching, teaching, pastoral leadership, and church administration.	
	9	Christian Ethics and Culture	A study of ethical principles and moral decision making in light of Christian teachings, and contemporary culture.	
	10	Ecumenism and Interfaith	An exploration of the relationships between different Christian denominations and interfaith dialogue, promoting understanding and collaboration among religious communities.	
	11	Sign Language	Developing proficiency in sign language, including religious vocabulary and Deaf grammar.	
	12	Christian Leadership	This course explores the principles and practices of effective Christian leadership.	

Bachelor's Degree (three years)

Those who have graduated from secondary school and have a secondary school certificate are directly eligible to enrol in a Bachelor's Degree program.

College Level	No.	Course	Description	Hours
Bachelor's Degree Year 1	1	Introduction to Biblical Studies (Part I)	This module typically covers an overview of the Bible, its history, and its various books.	
	2	Old Testament Survey	This course provides a broad understanding of the Old Testament, including key stories, characters, and themes.	

College Level	No.	Course	Description	Hours
Bachelor's Degree Year 1	3	New Testament Survey	Similar to the Old Testament survey, this course focuses on the New Testament, including the life and teachings of Jesus and the early Christian church.	
	4	Theology and Doctrine	This module explores the core beliefs and doctrines of Protestant Christianity.	
	5	Hermeneutics	Hermeneutics teaches the principles of interpreting and understanding the Bible accurately.	
	6	Church History	This course examines the history of the Christian Church, including key events, figures, and movements.	
	7	Pentateuch I	Students may learn the essentials of the Pentateuch which include the first five Book of the Hebrew Bible.	
	8	Counseling and Pastoral Care	Learning how to provide spiritual guidance and support to individuals and communities.	
	9	Deaf Ministry and Culture	Given the focus on Deaf individuals, there may be courses that explore Deaf culture and the unique challenges and opportunities in Deaf ministry.	
	10	English I	This subject should cover fundamental language skills; Tenses, Vocabulary, Grammar, Writing practice.	
	11	Linguistics of Sign Language	Developing proficiency in sign language, including religious vocabulary and Deaf grammar.	
	12	Ethics and Values	Examining ethical principles and values in the context of Christianity.	
	13	Discipleship	Equipping students with the skills to guide others in spiritual growth, fulfills the Great Commission, promotes personal spiritual maturity, and prepares them for effective ministry and community building.	

College Level	No.	Course	Description	Hours
Bachelor's Degree Year 2	1	Biblical Exegesis	This module often focuses on the indepth study of specific books of the Bible, teaching students how to interpret and apply biblical texts.	
	2	Theology	Theological studies might cover topics such as systematic theology, historical theology, and practical theology.	
	3	Church History II	This module explores the history of Christianity, including the development of Christian doctrines and the history of the Church.	
	4	Pastoral Ministry	Students may learn about the practical aspects of pastoral work, including preaching, counseling, and leadership in the church.	
	5	Missions and Evangelism	This module might cover strategies for spreading the Christian faith and engaging in missionary work.	
	6	Ethics and Christian Living	Discussions on ethical issues and how Christians should live out their faith in daily life.	
	7	Biblical Language/ Greek	This course typically focuses on teaching the basics of the Greek language specifically Koine Greek to help students read and understand the Bible in its original languages.	
	8	Biblical language/ Hebrew	This course is essential to cover the foundation concept of the Hebrew language.	
	9	Homiletics	Training in the art of preaching, including sermon preparation and delivery.	
	10	Pentateuch II	Students may learn the second part of the Pentateuch.	
	11	Spiritual Formation	This module often focuses on personal spiritual growth and discipleship.	
	12	Introduction to Biblical Studies (Part II)	This module typically covers an overview of the Bible, its history, and its various books.	

College Level	No.	Course	Description	Hours
Bachelor's Degree Year 2	13	ICT	Microsoft Office, Internet skills.	

College Level	No.	Course	Description	Hours
Bachelor's Degree Year 3	1	Advanced Biblical Studies	In-depth study of specific books of the Bible or Biblical themes.	
	2	Systematic Theology	Exploring the core doctrines of the Christian faith in greater depth.	
	3	Church History III	A detailed examination of the history of Christianity and the Protestant Reformation.	
	4	Hermeneutics	Advanced principles of interpreting and understanding Scripture.	
	5	Missions and Evangelism	Exploring strategies for spreading the Christian message both locally and globally.	
	6	Practical Ministry Skills	Hands-on training in areas such as counseling, worship leadership, and youth ministry.	
	7	Leadership and Church Administration	Students may study the principles of effective church leadership and how to manage and administer a church or ministry.	
	8	Apologetics	This module covers the defense of the Christian faith and how to engage with questions and challenges to Christianity.	
	9	Church Governance	Church Governance, students will be understood as the administration and control systems of a given church or denomination.	
	10	Counseling and Pastoral Care II	Deep learning and practicing how to provide spiritual guidance and support to individuals and communities.	

**** Course content is to be finalised. The above curriculums are based on those at our Deaf Bible Training Center in Uganda, and the East African Christian College.***



Student Fees

The annual fee for day students (non-boarding students) is US\$1,500. This fee includes application fees, registration fees, course fees and lunch, but no dinner, transport or student living allowance.

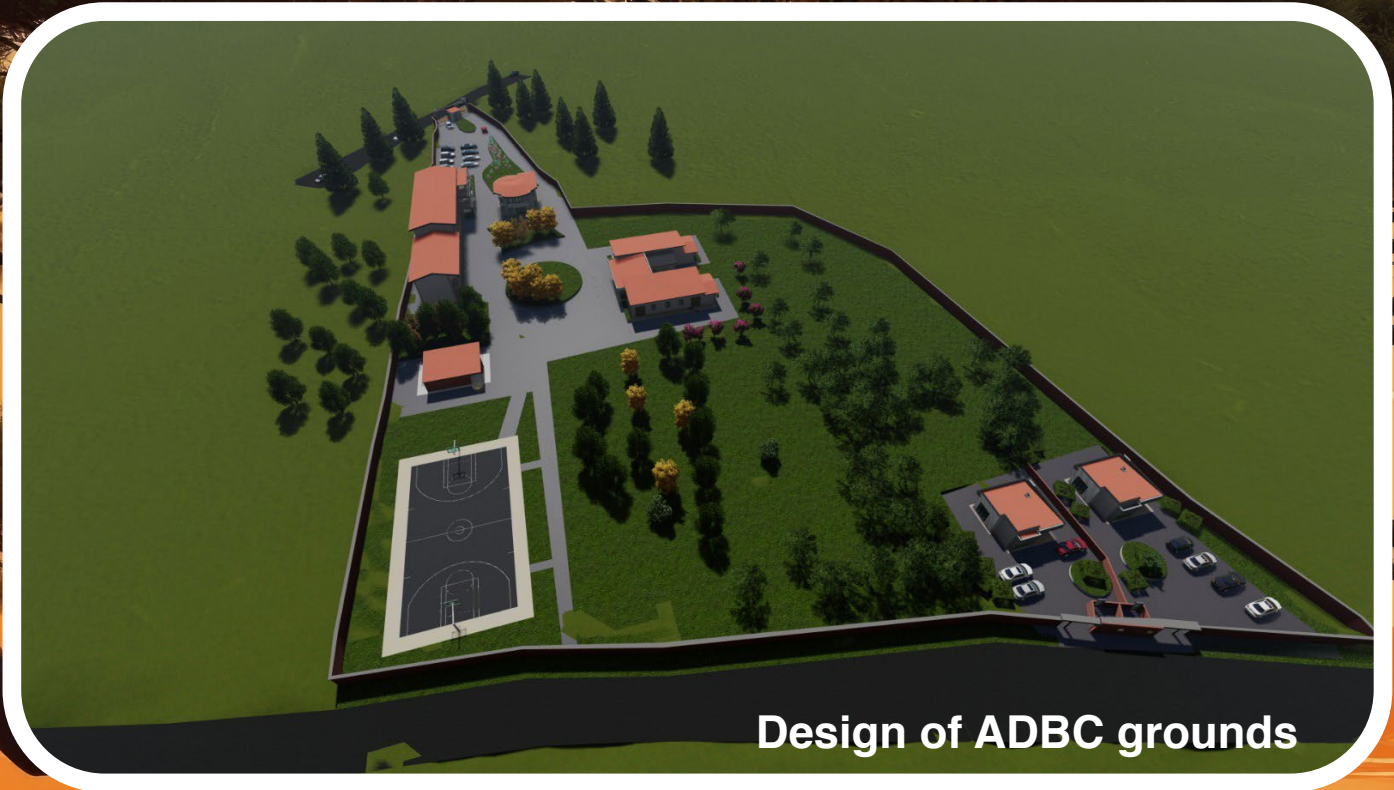
The annual fee for boarding students is USD 1,800 per student. This fee includes application fees, registration fees, course fees, student living allowance (USD\$10 per month), other academic-related fees and three daily meals.

Language of Instruction

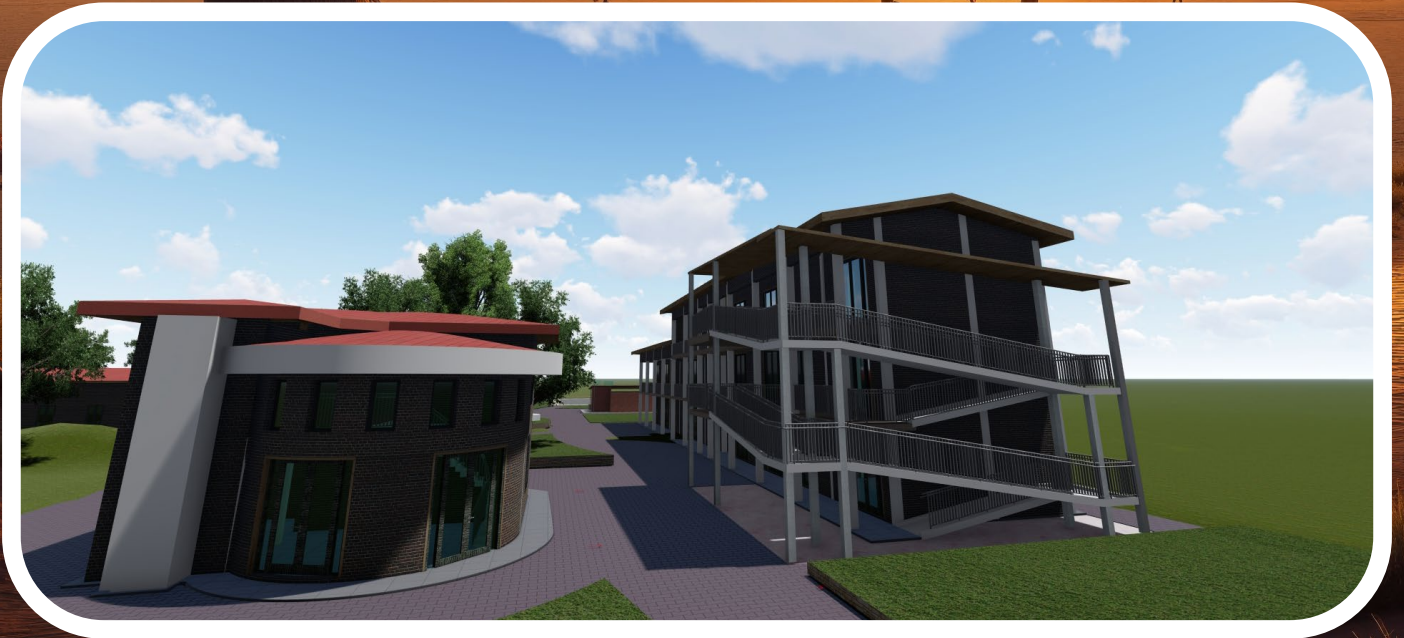
Sign Language will be the primary language of instruction for all courses, with English used for all writing. Rwandan Sign Language will be predominantly used in internal communication, however, as the goal is to train ministers to serve in their own sign language, all sign languages are acceptable for use at the school for both teachers and students.

Sign language interpreters will be employed at the college to ensure that Deaf students can easily understand the lectures of the hearing staff.

Proposed plans for college grounds



Design of Classrooms and Administration Office



Contact

The establishment of the African Deaf Bible College is a significant step towards empowering Deaf people through education and spiritual growth. With comprehensive planning and support from DMI and other partners, ADBC will become a centre of excellence, nurturing future leaders and spreading the Christian faith across Africa and beyond.

We invite you to be a part of this exciting work.

***“The harvest is plentiful but the workers are few. Ask the Lord of the harvest, therefore, to send out workers into his harvest field.”
Matthew 9:37,38***

Student Enrolments:

Patrick Tuyishimire

Executive Director

Deaf Action Ministry Rwanda

patrick.tuyishimire@deafmin.org

Partner Support:

Andrew Miller

International Director

Deaf Ministries International

andrew.miller@deafmin.org

Donation Information:

**Donations can be made by credit card or Paypal
from any country on our website:**

www.deafmin.org/donate (select the Africa Deaf Bible College in the dropdown options)

Bank Transfer Details:

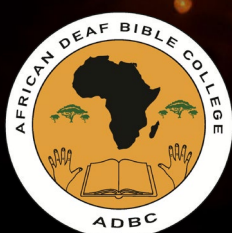
Account name: Deaf Ministries International Ltd
Bendigo Bank

BSB: 633-000

Account: 145833539

Swift Code: BENDAU3B

Reference: Bibleschool



www.deafmin.org